

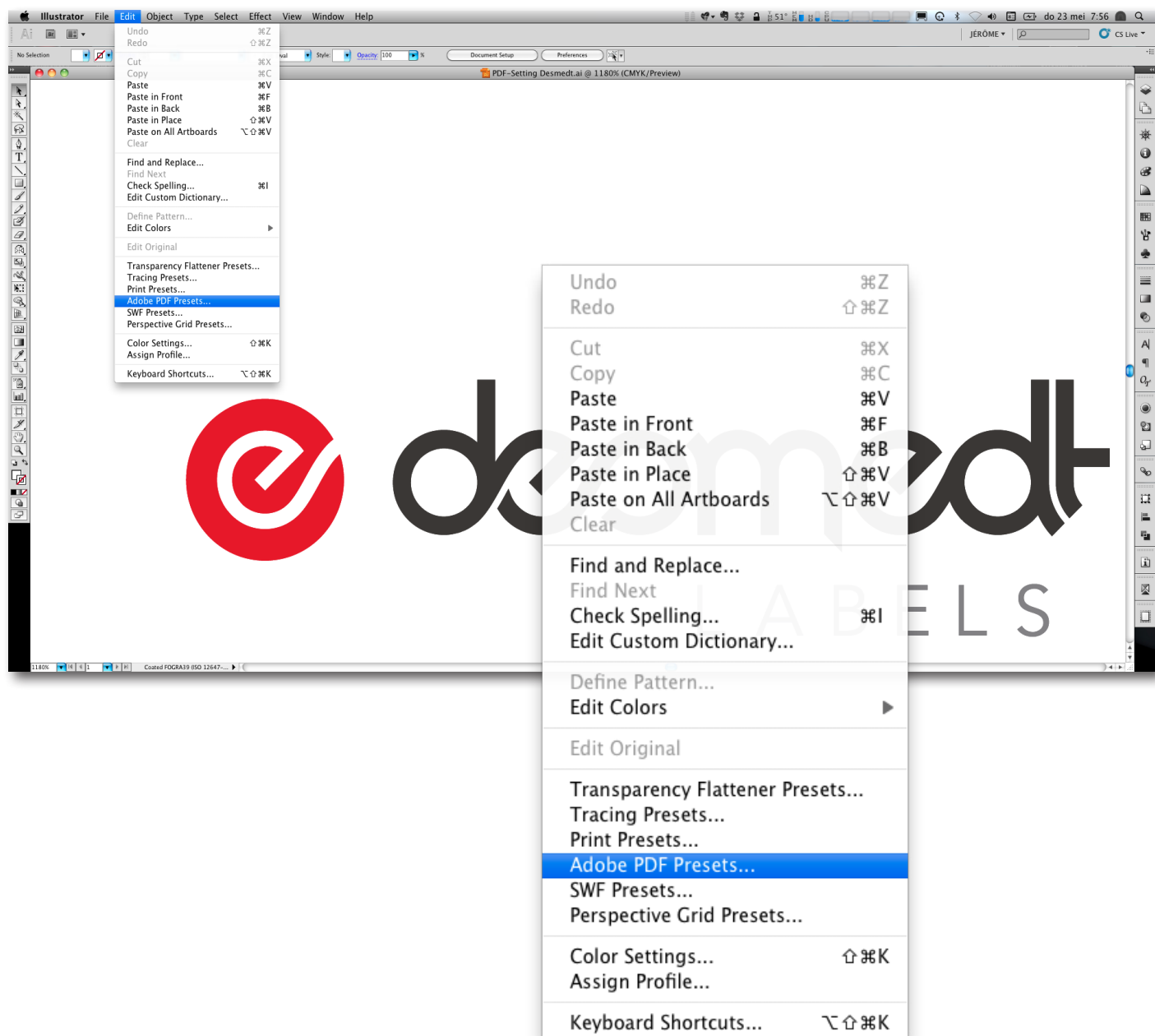
# PDF-Settings

To achieve optimal data processing, we would ask our customers to generate PDF documents applying specific settings, appropriate for our automated systems.

Please find a series of instructions and screenshots in the following section for the implementation of these settings.

## For Illustrator:

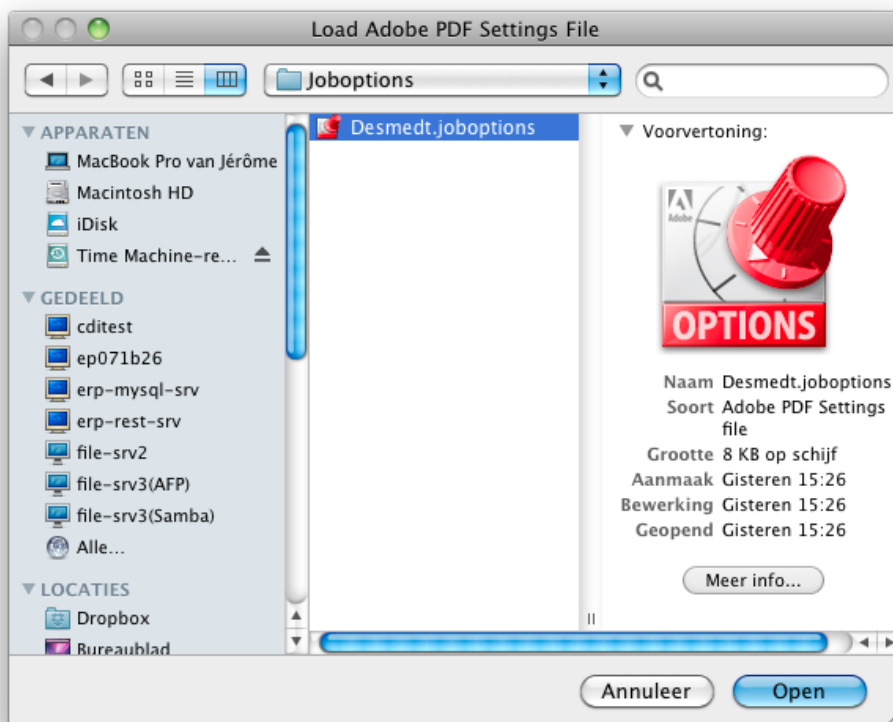
Menu **Edit** > Adobe PDF Presets > Define



Import the PDF-settings of Desmedt by clicking the 'import' button.



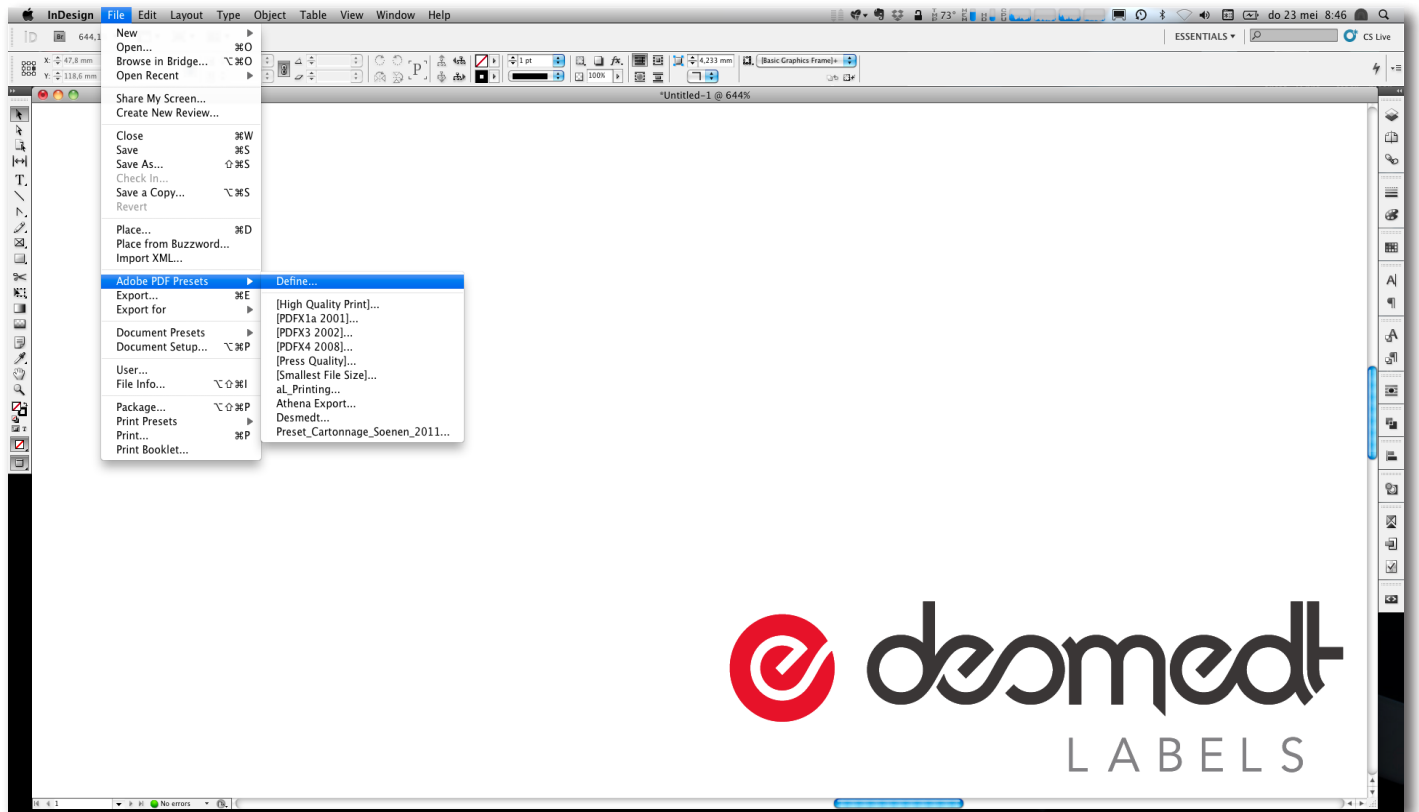
Find and select the job options you downloaded from our website.



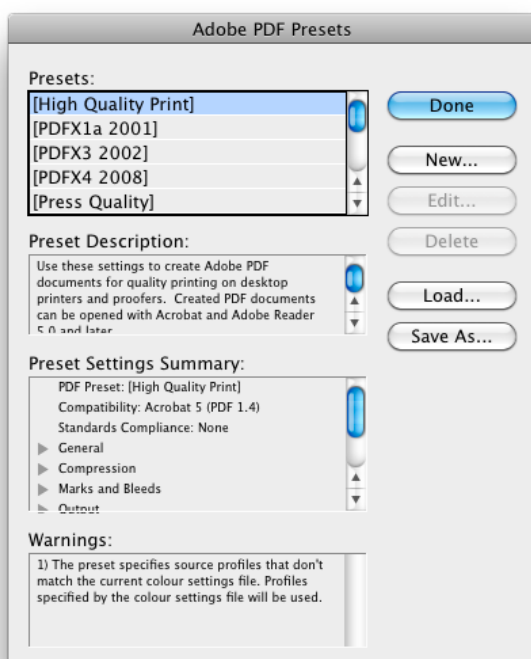
These settings can now be used to generate PDF documents suited for Desmedt's automated systems, starting from your layout files, by saving the file as a PDF document and selecting the 'Desmedt' Adobe PDF preset from the dropdown menu.

## For Indesign

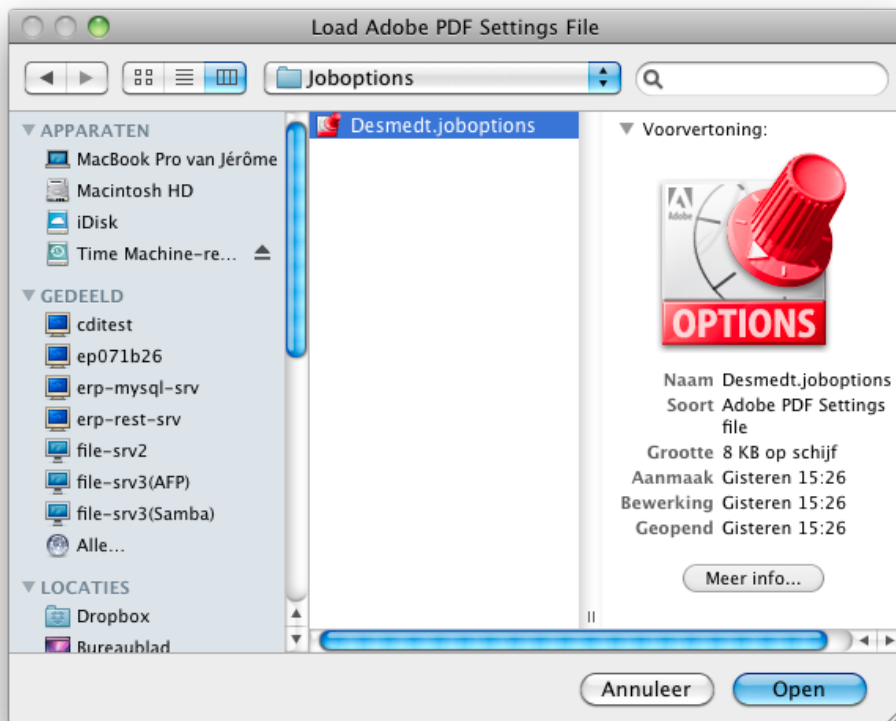
Menu **File** > Adobe PDF Presets > Define



Import the PDF settings of Desmedt by clicking the 'Load' button.



Find and select the job options you downloaded from our website.



These settings can now be used to generate PDF documents suited for Desmedt's automated systems, starting from your layout files, by exporting the file as a PDF document and selecting the 'Desmedt' Adobe PDF preset from the dropdown menu.